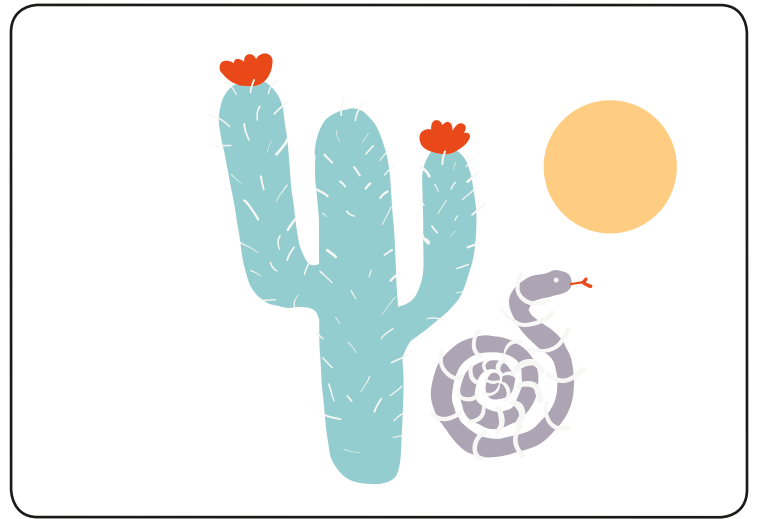
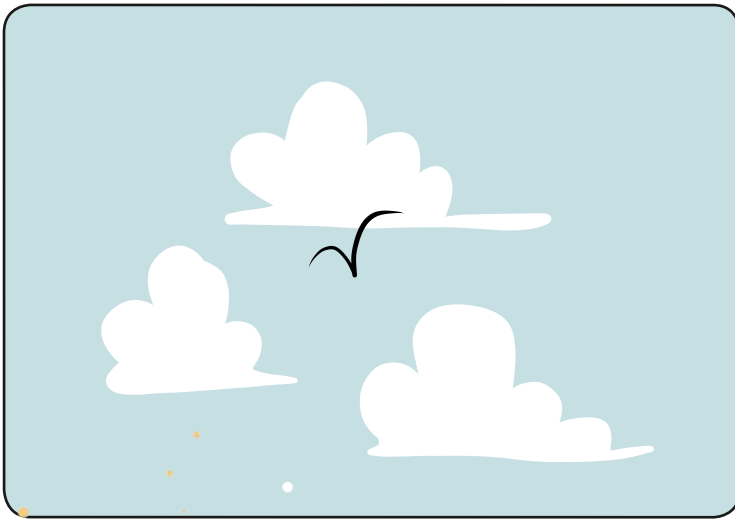
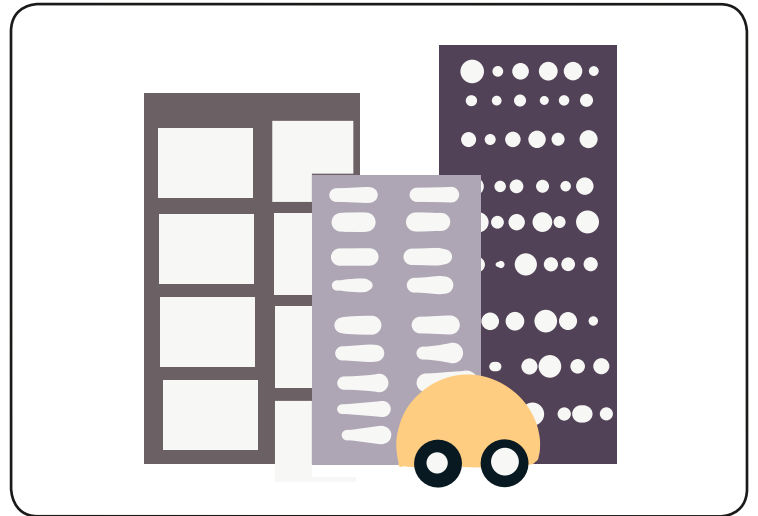


# Where Places

Open-ended flash cards make it easy to match your questions with the child's language abilities. Some examples include: "WHERE is the yellow car?" "WHERE do you find a cactus, snake, and the hot, hot sun?" "WHERE is the bird flying?" Make sure your expectations match their ability.

**These are tricky.** Some children may start by "Right there" and work up to "In the desert," or "In Outer Space!"

WH- Questions are the building blocks of language development!



# Where Prepositions

Open-ended flash cards make it easy to match your questions with the child's language abilities. Some examples include: "WHERE is the blue circle?" "WHERE is teal star?" "WHERE is the orange circle?" Make sure your expectations match their ability. Some children may start by pointing to the correct object and work up to saying "In the middle," or "Next to the yellow circle" or even "In front of the blue circle." Your goal is to work on answering WHERE questions with prepositions like *by*, *next to*, *in front of*.

WH- Questions are the building blocks of language development!

